



OPENING
17 OCTOBER 2008

For Reservations

Tel: +66 (0) 2217 3070,
Mobile: +66 (0) 879892525
(from 9.00 hrs. - 22.00 hrs.)

La Vue

FRENCH • MEDITERRANEAN
RESTAURANT

Open Monday – Saturday
from 18.00 Hrs. - 23.00 Hrs.



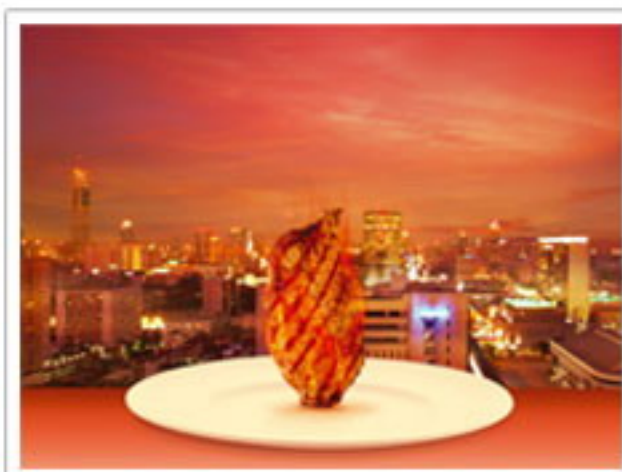
SKYDINE
DESIGN ON 25 | 360°
EXPERIENCE

Bangkok's most stylish
designer dining offering
a 360 degree podium to
view Asia's most exciting city.
Watch rainow sunsets over the
city's glittering sights,
while dining on gourmet
celebrity favourite dishes
amid an intoxicating ambience
of alfresco chic.

the **roof**

CHAMPAGNE & WINE BAR

Open Daily from 17.30 Hrs. - 24.30 Hrs.



the **roof**
RESTAURANT

Open Monday – Saturday
from 18.00 Hrs. - 23.00 Hrs.

Fact Sheet - SKYDINE DESIGN ON 25

Siam@Siam Design Hotel and Spa

- **"A 360-Degree Experience"**

SKYDINE DESIGN ON 25 is Siam@Siam Design Hotel and Spa's innovative concept of bar and restaurants on the 25th floor overlooking the center point linking the cosmopolitan business districts with skyscrapers in the east of Bangkok and the contrasting views of traditional Ratanakosin Island untainted by sky high towers. The project also provides magnificent views of several architectural landmarks, for instance, Golden Mountain at Wat Saket, Anata Samakom Throne Hall, Benchamapohit Temple (Marble Temple), Nang Leung Racecourse whilst unveiling the infinite views of the charming large green areas full of giant trees at Chitlada Palace. **SKYDINE DESIGN ON 25** will dazzle all eyes with breathtaking 360-degree panoramic views of Bangkok, offering one of the most spectacular spots in Bangkok to enjoy the unusual late afternoon watching the sun gradually drop towards the horizon.

Uniquely outstanding, **SKYDINE DESIGN ON 25** features **Industrial Hip** structure and **Industrial Art** decorations using steel and stainless steel as the main construction materials in the columns, shoulder poles and balconies to reflect the powerful, highly stable structure. The colour schemes of brightened deep blue and bright deep red are designed to express the bright and lively emotions of a happy lady, the hidden charm of the space 915.69 square meters, covering 2 dining sections, namely La Vue and The Roof Restaurant along with The Roof Champagne and Wine Bar which open daily from 6 pm to midnight.

- ◆ **La Vue**

The 50-seat upscale European restaurant offers classic French and Italian ambience through a

spacious and private dining experience surrounded by panoramic mirror decoration to offer superb, uninterrupted views of Ratanakosin Island and several architectural landmarks of Bangkok by night. A myriad of Bangkok views looking out from the 25th floor were creatively used in the decoration to make a frame around the panoramic mirror imitating the world's famous painting, **La Vue**, which stands for the name of the restaurant. **La Vue's** menu is truly exquisite. Only the finest ingredients from around the world are used in the food preparation and cooked by renowned chefs with years of experience in Southern Mediterranean cuisine. The food is cooked at the Skydine Design Kitchen, a see-through kitchen that reveals the entire process in the making of the famous dishes. La Vue's signature is the marriage of immaculate dishes with specific types of first-class wine for ultimate dining pleasure, for instance, pan-seared foie gras with cumquat and apple compote, served with Kabinett Halbtrocken, Schloss Vollrads 2006, or a popular seafood menu like lobster bisque with XO Cognac served with Macon Villages, Chameroy, Louis Latour 2005, etc.

◆ **The Roof Restaurant**

This multi-level design restaurant provides every seat on the roof top experience with remarkable angles of Bangkok by night. Designed to accommodate private dining and various parties or functions of up to 130 seated guests, The Roof is also Thailand's first stone grill alfresco restaurant. Food is freshly cooked on volcanic stones which can retain the heat for a period of 20-minute cooking. With the inside temperature exceeding 400 degrees Celsius, customers will be able to cook the food by themselves and eat it right away, a chance to enjoy "**Hot Stone Grill**" for the first time. Apart from a variety of international dishes made from the world's finest ingredients, the Roof's monthly **Full Moon Dining** is the restaurant's signature event.

◆ **The Roof Champagne & Wine Bar**

This 60-seat bar will complement your pre and post-dinner drinking pleasure to perfection through top-of-the-line champagne and wine collections from around the world, and in particular, your personal Sommelier with years of expertise to cater for every drinking need. The bar is unmatched in choices of exquisite and stylish pre-dinner drinks to entertain the customers while watching the amazing sunset.

- **Personalised Martini:** The only place to offer a unique martini made by a personal Sommelier who will provide advice and cater to every need.
- **A large collection of the finest red and white wine** from Bordeaux in the South of France and Mediterranean countries i.e. Chateau Mouton Rothschild, Chateau Lafite Rothschild, Chateau Latour, Chateau Margaux and Chateau Haut - Brion and also first class wine from California and Australia.
- **The World's Renowned Champagne** such as Krung, Dom Perignon, Veuve Clicquot Ponsardin and Pommery, Cuvee Louise Millesime, etc.